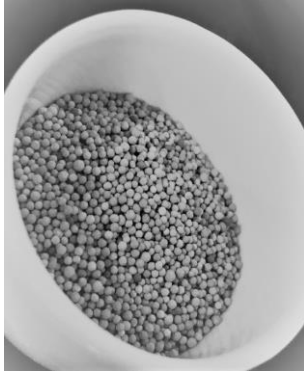


USCeramics MaxLite®

US - Manufactured Premium Economy Lightweight Ceramic Proppant



ECONOMY

A lightweight ceramic proppant formulated for high conductivity in moderate depth wells

AMERICAN - MADE

Made from local materials in the U.S.A.

INNOVATIVE

Available in 16/20
16/30 and 20/40 are in development stage

Typical Sieve Analysis (weight % retained)

US Mesh	Microns	MaxLite® 16/20
+ 12 mesh	+ 1700	0
- 12 + 16 mesh	- 1700 + 1180	3
- 16 + 18 mesh	- 1180 + 1000	60
-18 + 20 mesh	-1000 + 850	35
-20 + 25 mesh	- 850 + 600	2

Mean Particle Diameter (µm)	MaxLite® 16/20
Microns	1037

API/ISO Crush Test	MaxLite® 16/20
% fines	14
	19

Typical Additional Properties	MaxLite® 16/20
Roundness	≥0.8
Sphericity	≥0.8
Bulk Density (lb/ft ³)	95 ± 5
Absolute Specific Gravity (g/cc)	2.70 ± 0.05
Absolute Specific Volume (gal/lb)	0.044
Solubility in 12/3 HCL/HF Acid (% weight loss)	≤3

*Superior Performance You Can
Trust For Your Completion
Challenges*



www.usceramics.com

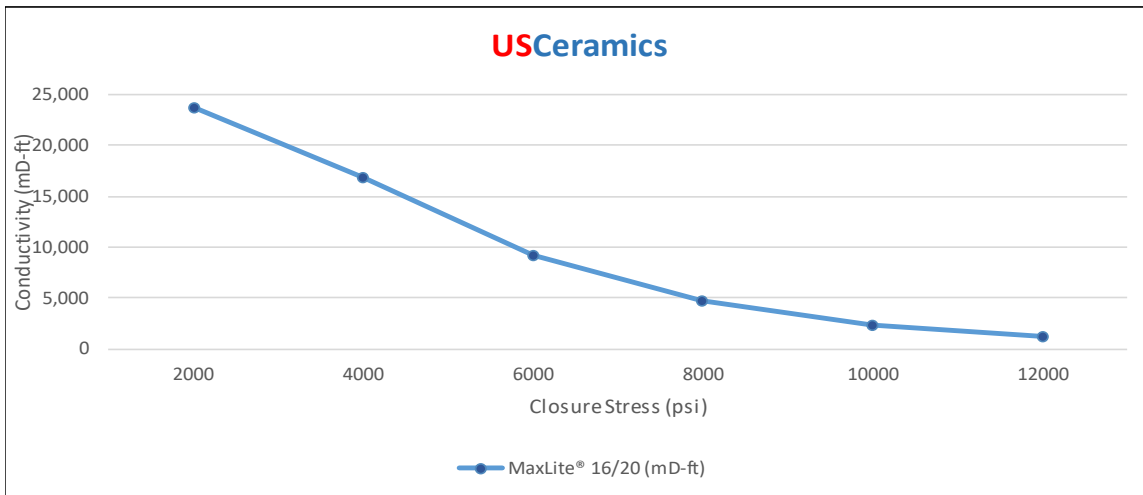
USCeramics MaxLite®

US - Manufactured Premium Economy Lightweight Ceramic Proppant

Long Term Conductivity*

2lb/ft² - 250°F - 2% KCl Water - Ohio Sandstone

Closure Stress (psi)	MaxLite® 16/20 (mD-ft)
2000	23,704
4000	16,915
6000	9,183
8000	4,788
10000	2,373
12000	1,241



* Conductivity and Permeability testing completed per API RP 19D / ISO 13503-5 specifications. All data measured by third party industry test laboratory.

Long Term Permeability*

2lb/ft² - 250°F - 2% KCl Water - Ohio Sandstone

Closure Stress (psi)	MaxLite® 16/20 (Darcy)
2000	1,218
4000	905
6000	516
8000	283
10000	146
12000	79



1300 Commerce Connector
Wrens, GA 30833